

THE RIPPLE EFFECT

BY AUDREE LEBDJIRI



PAUL JEFFREY/ACT INTERNATIONAL

IN THE NORTHEASTERN SRI LANKAN VILLAGE OF VELORE, A CLOCK STOPPED AT THE MOMENT THE TSUNAMI WASHED OVER THE VILLAGE.

The tsunami that hit the shores of nine countries in South East Asia during the Christmas holidays left hundreds of thousands dead and millions homeless and destitute. People from all over the world have given generously in the hope that their contributions will somehow help the victims.

“Our culture has been saturated with stories of death and dying,” says Pastor Joy Douglas Strome, “That’s why when the tsunami disaster happened, we all felt compelled to do something.”

Throughout the month of January, LVPC collected Gift of the Heart Health Kits for the Presbyterian Disaster Assistance (PDA). The response from LVPC was overwhelming, with some members contributing ten kits per family.

The kits contained some very basic items: a hand towel, a comb, a bar of soap, a tube of toothpaste, 1 washcloth, 1 metal nail file with clippers, 1 toothbrush and 6 Band-Aids. These items do not seem like they could be of any use in a post-disaster situation, but they are. “These health kits,” says Pamela Burdine, a representative from the PDA, “restore the dignity of the survivors, by helping them keep clean. We include Band-Aids because many survivors have cuts to their hands.”

“It’s a start,” says Joy. “By my calculation each kit costs about \$6.50 to put together. Surely we as a congregation can do more.”

The Presbyterian Church (U.S.A.)’s goal for the relief effort is to raise \$2.5 million, or \$1 per church member. The PDA met in Geneva, Switzerland with members of Action by Churches Together International (ACT), which is a global alliance of churches and church-based agencies, to coordinate their efforts in the region. Given the magnitude of the disaster, the tsunami relief effort is going to have to continue for a long time.

“The initial \$320,000 for the initial tsunami relief effort came from the One Hour of Sharing funds,” says Burdine.

One Hour of Sharing is a fund raising drive that occurs through the Lenten season to raise money for ministries of disaster response, refugee assistance, resettlement, and community development for economically disadvantaged populations and countries. This massive collection drive of “spare change” gathers badly needed funds for these projects and more.

“One of our One Hour of Sharing projects in India, where fishermen could build their own boats and catch fish to eat, was completely destroyed by the tsunami,” continues Burdine, “That’s why we your need help more than ever.”[¶]



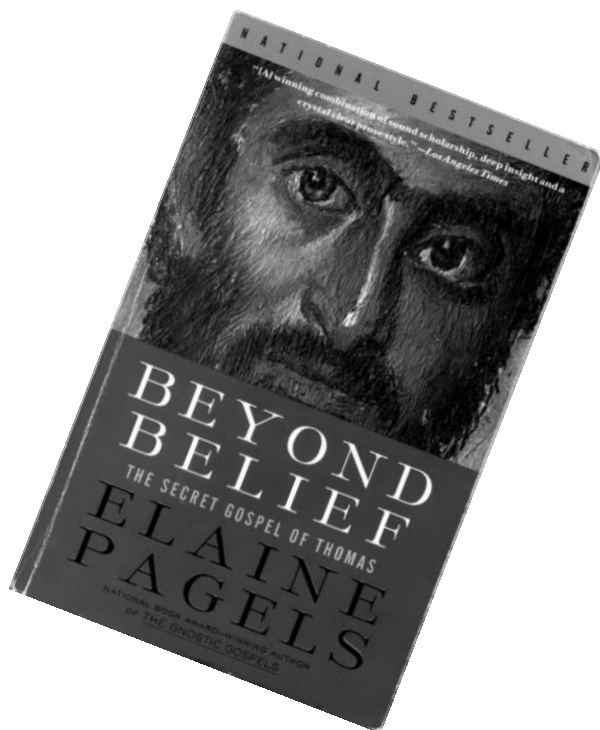
**PRESBYTERIAN
DISASTER
ASSISTANCE**

MAKING SPACE

JOY DOUGLAS STROME



JILL WUJANGCO



When, quite by accident, an Arab peasant in 1945 uncovered a red earthenware jar in northern Egypt, I doubt he understood the snowball affect he would have on the religious world of Christians.

Discovered near the town of Naj Hammadi, this jar contained thirteen papyrus books, bound in leather. No, we aren't describing the next installment of an Indiana Jones movie. It would take many years to understand the significance of these thirteen books, but over the course of the next 60 years or so, scholars would work to translate and piece together what turns out to be 52 texts from the same time period as our own New Testament writings. They include material that no one in modern scholarship had ever seen. While the scholars worked to untangle what these texts might mean, bits and pieces of information have leaked out into popular culture and have spawned movies and books that have sensationalized the details discovered without any of the background or analysis to help conscientious Christians put the new findings into perspective. Lacking that knowledge, Christians are left with what seems like two choices: rejecting anything that is not in the "real" Bible, or deciding that the Bible of our tradition is incomplete and thus, somehow suspect. Perhaps there are more than two choices.

Elaine Pagels, the Harrington Spear Paine Professor of Religion at Princeton University, has participated in much of the scholarship dedicated to this topic and has written extensively about the texts. In her book *Beyond Belief, the Secret Gospel of Thomas*, she examines the history of the "orthodox" church and how a set of "right beliefs" were established for the early church. An examination of the gospel of Thomas is compared to the church's established doctrine and writings and a bigger picture of the first Christian community emerges.

"How one interprets Jesus' death has much to do with how one understands their faith."

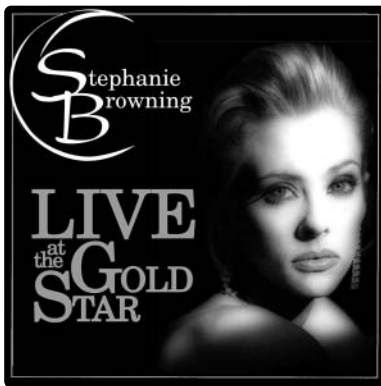
ELAINE PAGELS
AUTHOR OF BEYOND BELIEF THE SECRET
GOSPEL OF THOMAS

If Advent is a time to prepare for Jesus' birth in our lives, Lent becomes the time when we prepare for the "so what" of that Christmas miracle. To deepen our understandings of the person Jesus and the savior Christ are ongoing life tasks for every believer. Lent is the liturgical season that makes space for this important work. Pagels writes "how one interprets Jesus' death has much to do with how one understands their faith." Especially pertinent given the situation in the world around us, it is important that we understand how our tradition has been built and how we will shape it going forward. How can we hope to understand the religious tensions that are driving much of the conflict in the world without first gaining a solid understanding of who we are as Presbyterian Christians? I hope that you will join us in our church wide study of Elaine Pagels' intriguing book: *Beyond Belief, the Secret Gospel of Thomas*. There are many ways options for participation. Please check the Sunday bulletin and the website for more information about how you can join us as we make space for growing our faith.☮

MUSIC FOR LOVERS

Looking for the perfect way to treat your lover or loved one to a very special Valentine's evening? LVPC will feature some of the most talented voices and musicians in the Chicago area in a special concert on Sunday, February 13 at 7:30 p.m. Tickets are \$30 and are available at the door. Proceeds from the concert will benefit LVPC's Exterior Renovation Project. There will also be door prizes of wine and CDs given away, so you might even be able to skip the obligatory dozen roses.

Here's a taste of some of the featured performers:



Stephanie Browning

Stephanie Browning's CD *Live at the Gold Star* captures her powerful vocals in the intimate setting of one of Chicago's legendary jazz venues. Chicago Tribune arts critic Howard Reich said, "Though the Sardine Bar has presented several fine young artists over the years, Stephanie Browning is the most compelling of them all." Stephanie's voice has taken her all over the United States as well as Hong Kong, Japan, and Sweden. Find out more at www.stephaniebrowning.com.



Kara Kesselring

Vocalist, pianist, arranger, and LVPC member Kara Kesselring has worked with well-known jazz vocalist Sunny Wilkinson and has two CDs, *If I Should Lose You* and *Sonho Meu*. In addition to her own projects of pop and jazz, Kara performs in a corporate band, Standing Room Only Orchestra, and is in a duo with her husband Patrick Williams. Read about Kara at www.karakesselring.com



Dayna Malow

Dayna Malow was studying jazz voice at the University of Miami when she became enthralled with the music her Kentucky born roommate was playing. In 2001 she released her first album, *Anywhere but here*, a hearty blend of country and pop. After much critical attention, she began opening for country stars like Blake Shelton, Gary Alan, and Mark Wills. Her new album, *Tangled Up in You*, was released late last year. There's more about Dayna at www.daynamalow.com



Typhanie Monique

ChicagoLocalBands.com calls Typhanie Monique "A vocal tour de force. A spirited, gifted performer and superb writer." A founding member of the critically acclaimed band Peking Turtle, Typhanie went solo in 2002 and has been working with some of the top musicians on the jazz scene. Her latest CD, *Intrinsic*, is a collaboration with jazz guitarist Neal Alger, who will also be featured in the concert. Learn more about Typhanie at www.tmonique.com.

Also on the bill are vocalist Pat Mosely, Mitch Paliga on saxophone, Rachel Shaftman on piano, drummer Ryan Bennett, Joann Daugherty on piano, and LVPC's own John Erickson.☺

CALENDAR



FEBRUARY

EVERY SUNDAY

Study the Bible with the Niners Class. They meet at 9:00 a.m. in the Chapel.

Sunday service in the Sanctuary at 9:00 a.m. and 11:00 a.m. Childcare is provided in the Mulford Room. Coffee hour and time for fellowship immediately follows both services.

Sunday school for children at 10:00 a.m. Classes for ages 3-4 and grades K-5 meet in the Academy.

Choir practice at 10:00 a.m.

Share your thoughts about faith and life in Begin@10 class, 10:00 a.m. in the Chapel.

Free parking is available evenings and weekends in the Recycled Paper Company lot north of the church. Access the lot from the alley.



ADVANCE WARNINGS: SIGN UP NOW!

Food for Thought: Just Across the Border—See February 1

Winterfest—See February 5

New Members Class—See February 10

Jazz for Lovers—See February 13

Food for Thought: Beyond Belief: the Secret Gospel of Thomas—See February 22

Congregational Meeting—See February 27

TUESDAY, FEBRUARY 1

Regular exercise is the key to vitality, so join the Seniors in Motion fitness class. An exercise specialist from Advocate Fitness leads the group. Class begins at 10:00 a.m. in Fellowship Hall.

The Deacons meet at 6:00 p.m.

Food for Thought continues with Just Across the Border, an exploration of immigration-related issues, led by LVPC member and immigration attorney Ruth Dunning. Class begins at 7:00 p.m. See the front-page article in the January Chimes for more details.

WEDNESDAY, FEBRUARY 2

Choir practice at 7:15 p.m.

Young Adult Bible Study meets at 9:00 p.m.

FRIDAY, FEBRUARY 4

A Taize service features scripture reading, repetitive singing, and meditative silence, combining traditional worship forms in a contemporary way. The goal is to enable participants to remain open to the voice of God and discover the prayer within themselves. Join us tonight at 7:30 for Taize.

The Café Pride Coffeehouse meets from 8:00 p.m. to midnight and serves a safe place for gay, lesbian, bisexual and transgender youth ages 17 – 21 to get together.

SATURDAY, FEBRUARY 5

Come out in the cold, come out for some fun at Winterfest 2005. There will be ice skating at Bicentennial Park (Randolph Street and Lake Shore Drive) from 10:00 a.m. to 12:00 p.m., followed by lunch back at the church. Don't miss Tom DeFries world famous chili! Sign up in the back of the Sanctuary.

SUNDAY, FEBRUARY 6

Lake View Pantry food donations and Two Cents A Meal offerings will be taken at the morning worship services.

The Youth Group meets after the 11:00 a.m. Worship Service.

TUESDAY, FEBRUARY 8

Seniors in Motion meets at 10:00 a.m. See February 1 for details.

Food for Thought continues with Just Across the Border, an exploration of immigration-related issues. Class begins at 7:00 p.m. See the front page article in the January Chimes for more details.

WEDNESDAY, FEBRUARY 9

Today is the first day of Lent, when we enter a time of preparation for Easter. To observe this important day on the Christian calendar, there will be two Ash Wednesday services at 12:00 and 7:00 p.m.

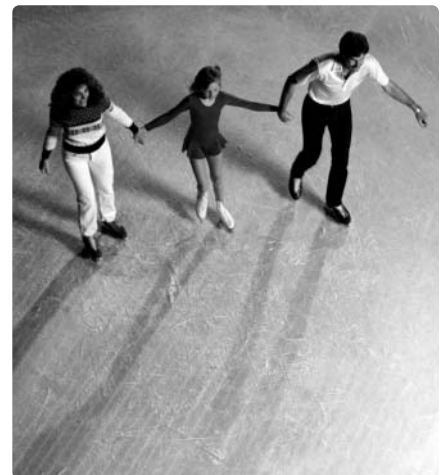
Choir practice at 8:00 p.m.

Young Adult Bible Study meets at 9:00 p.m.

THURSDAY, FEBRUARY 10

The Affordable Housing Taskforce meets at 7:00 p.m.

Find out what it means to be a member of Lake View Presbyterian Church at the New Members Class, beginning tonight at 7:00. It's a chance to learn about the church's ministry and the Presbyterian Church (U.S.A.) and meet church members. To register call the church office at (773) 281-2655 or sign up in the back of the Sanctuary.



FRIDAY, FEBRUARY 11

Café Pride meets from 8:00 p.m. to midnight in the Fellowship Hall. See February 4 for more information.

The Carroll College Wind Symphony from Waukesha, Wisconsin will present a special concert in the Sanctuary at 7:30 p.m. Directed by Lawrence D. Harper, the Symphony will present traditional wind music by composers Gustav Holst and John Zdechlike as well as contemporary pieces. A reception will follow the performance. The event is free. An offering will be taken.

SATURDAY, FEBRUARY 12

The More Light Taskforce meets at 9:00 a.m.

Be of service to others by volunteering tonight at Lakeview Shelter. The group meets at the shelter at 5:30 p.m. For more information, call the church office at (773) 281-2655 or contact a Deacon.

SUNDAY, FEBRUARY 13

Chicago's best vocalists and instrumentalists collaborate in an incredible concert to benefit the Exterior Renovation Project. Vocalists Typhanie Monique, Stephanie Browning, Kara Kesselring, Dayna Malow, and many more will take to the stage with a full jazz band. The artists featured have performed at such places as the Green Mill, Gold Star Sardine Bar, Pops for Champagne, the Drake, and more. What better way to spend a romantic evening than listening to love songs and jazz standards? The Concert begins at 7:30 p.m. and door prizes of CDs and wine will be given away. Invite friends, co-workers, and family! Tickets are \$30.00 person and can be purchased at the door. See the article on page 5 for more details.

MONDAY, FEBRUARY 14

The Finance Committee meets at 6:30 p.m.

The Fundraising Committee meets at 7:30 p.m.

TUESDAY, FEBRUARY 15

Seniors in Motion meets at 10:00 a.m. See February 1 for details.

WEDNESDAY, FEBRUARY 16

Worship Committee meets at 6:00 p.m.

Choir practice at 7:15 p.m.

Young Adult Bible Study meets at 9:00 p.m.

THURSDAY, FEBRUARY 17

The New Members Class continues at 7:00 p.m. See February 10 for details.

FRIDAY, FEBRUARY 18

Monthly prayer meeting in the chapel at 12:00 noon. Call Peg Hazenbush at (773) 871-0312 for more information.

Café Pride meets from 8:00 p.m. to midnight in the Fellowship Hall. See February 4 for more information.

SUNDAY, FEBRUARY 20

New Members will be received at the 11:00 a.m. worship service.

The Youth Group meets after the 11:00 a.m. worship service.

MONDAY, FEBRUARY 21

The Social Justice Committee meets at 7:30 p.m.

TUESDAY, FEBRUARY 22

Seniors in Motion meets at 10:00 a.m. See February 1 for details.

Joy Douglas Strome leads the Lenten Food for Thought, Beyond Belief: the Secret Gospel of Thomas. Never heard of Thomas? You're not alone. With the extra-Biblical writings becoming bestseller books in popular culture, the need to understand how these texts can aid our study of the bible and ultimately our faith is timely. Class begins at 7:00 p.m. Sign up in the back of the Sanctuary. Note that all LVPC classes will be studying this book during Lent. See Joy's article on page 2 for more details.

WEDNESDAY, FEBRUARY 23

Session meets at 7:00 p.m.

Choir practice at 7:15 p.m.

Young Adult Bible Study meets at 9:00 p.m.

FRIDAY, FEBRUARY 25

Café Pride meets from 8:00 p.m. to midnight in the Fellowship Hall. See February 4 for more information.

SATURDAY, FEBRUARY 26

February's Movie Night feature is *Eternal Sunshine of the Spotless Mind*. It's the story of a guy, Joel (Jim Carrey), who discovers that his long-time girlfriend, Clementine (Kate Winslet), has undergone a psychiatrist's experimental procedure in which all of her memory of Joel is removed, after the couple has tried for years to get their relationship working fluidly. Joel agrees to undergo the procedure as well, then realizes he doesn't really want to forget Clementine, so he starts smuggling her away into parts of his memory where she doesn't belong. The movie is rated R for language, some drug use and sexual content. The show beings at 7:30 p.m.

SUNDAY, FEBRUARY 27

The annual Congregational Meeting takes place after the 11:00 a.m. service. You'll hear about everything that's been going on at LVPC during the past year and get a preview of 2005. Also, don't miss Dale's always entertaining year-end video. The meeting includes a potluck lunch. Sign up in the back of the Sanctuary.☞

YOU SAY IT'S YOUR BIRTHDAY

2/1—Paul Beckles

2/4—Dave Elliot

2/5—Douglas Galbraith

2/7—Sharon Schieleit

2/8—Bryan Saner

2/12—Cathy McKee

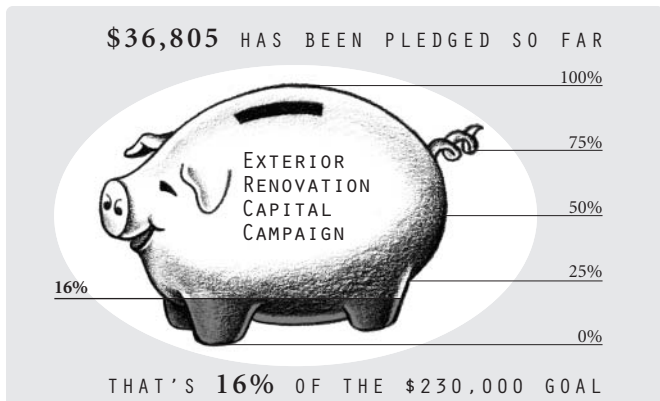
2/14—Esther Benemerito Garcia

2/17—Idahlia Middleton

2/19—Camille Diekhans

2/21—Cecile Dan

2/25—Tracy Wren☞



AFRICAN MAHOGANY TRIM WAITING TO BE INSTALLED AS PART OF THE EXTERIOR RENOVATION PROJECT. THE WOOD WAS CHOSEN BECAUSE, UNLIKE MAHOGANY FROM SOUTH AMERICAN RAINFORESTS, IT IS A RENEWABLE RESOURCE.

CHIMES STAFF

Editor Eric Diekhans
 Reporter Audree Lebdjiri
 Design Michelle Goodman
 Photography Jill Wijangco
 Distribution Daisy Braucher, Bill Hastings,
 Betty Larsen, Herb Simms

LVPC STAFF

Joy Douglas Strome Pastor
 Tom Gyori Parish Associate
 David Murad Parish Associate
 Dick Poethig Parish Associate
 Lindsey Lewis Seminary Intern
 Polly Toner Seminary Intern
 Dale Heidebrecht Program Manager/Choir Director
 Sue Cox Parish Nurse
 John Erickson Pianist
 Deborah Bayly Principal, Lake View Academy

Submission deadline for the March issue is February 15. Send articles, calendar listings, rants, and raves to Eric Diekhans at ericdiekhans@ameritech.net. Or leave material in the Chimes mailbox outside the church office.☺



Lake View Presbyterian Church

716 West Addison Street
 Chicago IL 60613
 (773) 281-2655
www.lakeviewpresbyterian.org

Non-Profit Org.
 U.S. Postage
 PAID
 Chicago IL
 Permit No. 5385

OPEN
 DOOR

OPEN
 HEART

OPEN
 MIND